



ELIZABETH COLLEGE FOUNDATION

September 2015

Contents

Chairman's Introduction	1
Thanks to all Donors	1

Progress Report

With all the high-profile projects we have undertaken in and around the main building over the past decade ... the sixth-form centre, the maths building, the refectory and so on ... the dear old 'tennis court' area right in front of the College has been largely left in the shade. Although it's long been something of a blot on the landscape, there have been other priorities to which the Foundation has directed its attention.

Old Tennis Court
Recreational Area 2

College Field Pavilion
Redevelopment 3

Future Projects for
the Foundation 4

News from
the Dead
Donkey Club 4



At long last, however, the area has now been transformed into a much-needed recreational space.

It is only through the generosity of OEs, parents and other College supporters (and a number of recent benefactions) that we have been able to achieve so much. Not a year has gone by in the last ten without a significant addition to College facilities paid for by donations to the Foundation.

The difference this has made to the education of island boys (and girls at the Junior School) has been immeasurable.

Guernsey has rightly always been proud of its ancient seat of learning. Today, it should be more proud of Elizabeth College and its benefactors than it has ever been.

Bruce Parker
Chairman - Elizabeth College Foundation

The Impact of Your Donations



Your donations and those of fellow Old Elizabethans, current and former parents and staff and other supporters of the College to the Foundation Appeals have made a huge difference to the life of pupils at Elizabeth College, and the sustainability of the College itself.

The College's Directors, staff and pupils are immensely grateful that these generous donations have made otherwise unaffordable projects possible. As reported elsewhere in this newsletter, these donations and a couple of recent legacies received through the Dead Donkey Club have meant that the Foundation has been able to fully fund all of the phases 1 to 3 projects in the 450th Anniversary Appeal. We hope that you are delighted with the huge impact your generosity has had.

Many donors pledged to support the Foundation Appeal through a standing order over five years. Once all of these pledges have been fulfilled it is hoped that the Foundation will hold a balance of funds which can be used as seed corn

funding for a bursary scheme. Given the high capital requirements of any bursary fund this is likely to be a principal objective for the next appeal in 2018/2019.

All donors are listed and formally thanked in the Elizabeth College Foundation 450th Anniversary Appeal Roll of Honour, copies of which are on display in the reception area of each of the schools.



The Old Tennis Court Recreational Area



During the summer holidays the last phase 3 project from the Elizabeth College Foundation 450th Anniversary Appeal development plan was completed, namely the redevelopment of the old tennis court recreational area.

This much used facility has been fully refurbished to provide a greatly enhanced facility. As well as serving as a football pitch at break and lunchtime, this invaluable area in the centre of the College campus is used by the CCF, during PE and games lessons and as an additional car park for College meetings and events.



The recreational area has been completely excavated and a new surface laid. This will shortly be given a finishing coat of paint with markings applied in order to create a 6-a-side football pitch. New strong green plastic coated fencing has been installed to improve both the functionality and aesthetics of the area. This includes the installation of a low kick panel suitable for either football or hockey and the creation of a recessed goal at each end.

In addition the patio behind the recreational area has been extended to provide a much larger area for pupils to sit and enjoy their break or lunch during the better weather.

The old tennis court was originally created by pupils on top of an old WWII air-raid shelter, see the extract from the 1953 Elizabethan below. Fortunately old maps of the layout of this shelter were available to inform the excavations. A corner of the old German concrete shelter has been deliberately left exposed to highlight the interesting history of this area.



The Elizabethan December 1953 – Editorial (extract)

We mentioned in the last number of the Elizabethan the plan to restore the front of the College ground. In August, 1939, air-raid shelters were dug there by the boys and during the occupation these were replaced by massive shelters of concrete built by the Germans.

After the end of the war all except one of the entrances to the shelters were destroyed, but nothing further was done to reduce the unsightliness of the place. Several schemes of restoration have been drawn up during the last few years but they have all proved too costly. Approval has now been given by the Directors and the necessary money voted by the States for a scheme that will give the boys an opportunity to do much of the work themselves.

It is hoped that after preliminary levelling by machinery the boys (under professional supervision) will first of all construct a hard tennis court between the gym and the Porter's Lodge. Below that will be a flat grass terrace which in time may be used for cricket nets and hockey practice. The second of the concrete wickets which the Germans buried in top-soil will be dug out and restored. Below the nets a jumping pit will be constructed to replace the one that was there before the war, and around the whole will be a gravel path. This work will increase the area available for games and remove one of the last, and one of the most unsightly, traces of the German occupation of the College.

College Field Pavilion

The iconic pavilion at College Field was built in 1924 as a memorial to Old Elizabethans lost in the Great War. Although the Pavilion is not listed as a Heritage Building, it is treated by the College as such and all maintenance work takes due account of the historic nature of the building.

The pavilion is heavily used by many College and other teams over the cricket and football seasons and the facilities had become in desperate need of refurbishment due to their poor condition and outdated design. A plaque in the showers suggested that these areas had not been refurbished since 1938.

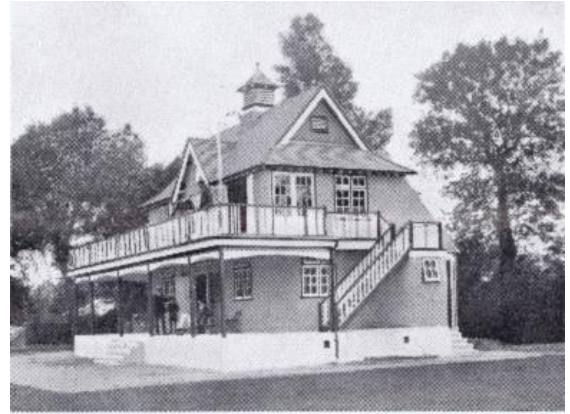
A grant from the Elizabeth College Foundation meant that work was able to start on the refurbishment during the 2015 Easter holidays and was completed in time for the start of the Cricket season.

The aim of the work was to modernise the facilities in the pavilion whilst retaining the tradition and charm of this delightful 1920s building. This included a complete removal and replacement of the kitchen, toilets and showers as well as refurbishment and painting of the ground floor changing rooms and first floor dining area. A few enhancements were also incorporated including the addition of a new storage area and IT connectivity to the College system to support coaching and sports teaching.

Improvements were made to the lighting system throughout the pavilion. The refurbishment also included the removal of old asbestos insulation which required the use of specialist resources and equipment.

The result is a pavilion still very much styled in the traditional way but with suitably up to date internal fittings.

It is intended that external refurbishment and repainting of the pavilion will be completed before next summer.



THE NEW PAVILION.
The Elizabethan October 1924



Future Foundation Projects

The Elizabeth College Foundation has now been established for 8 years and has undertaken two very successful appeals; in 2007 and 2012.

Donors to these appeals; parents, Old Elizabethans and others associated with the College, have been able to make a huge impact on the educational facilities at Elizabeth College, as documented in this and previous newsletters.

Their donations so generously given to the Foundation Appeals have completely paid for 9 transformative capital projects across the school, namely the Sixth Form Centre, Beechwood All Weather Pitch, Acorn House Reception suite (comprising 2 new classrooms completed five years apart), the Robin Roussel Pavilion, FG Manchester Refectory, Performing Arts Studio, Mathematics Faculty extension and, now, the old tennis court recreational area.



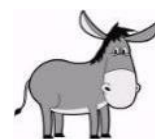
Elizabeth College Benefactors board in the Le Marchant Room

Several smaller projects have also been enabled by the Foundation including the College Field pavilion refurbishment, electronic shooting equipment, fencing scoring systems, ICT enhancements and new staging for drama productions.

These projects are all investments which the College would have been unable to make from fee income alone, without a substantial increase in the annual school fees payable. The College is determined to maintain fees at as low a rate as possible to ensure that an Elizabeth College education is still available to ordinary families and pupils from all backgrounds.

The longer term objectives of the Foundation, the establishment of a bursary fund and the refurbishment of the all-weather pitch at the Memorial Field, remain as priority projects and will be the subject of a future appeal.

The Dead Donkey Club



The Dead Donkey Club was created over five years ago and now has an active and thriving membership. The entry criterion of the club is very simple: it is open to anyone who has made provision in their will for the Elizabeth College Foundation in their Will.

The club holds a number of social events throughout the year for any members who wish to get involved, including at least one annual event in England for the benefit of UK members. In March this year, members were delighted to be invited to a reception in the hallowed premises of the Garrick Club, courtesy of OE Adrian Fulford.

Guernsey based activities this year have included a delicious lunch in the College's FG Manchester Refectory followed by a historic tour of the College and a 'Walk, Talk

and Taste' around the lanes of Castel lead by the delightful and knowledgeable Gill Girard.

A Dead Donkey Club legacy recently received by the Foundation has provided funding to enable the College's archives to be made accessible to everyone. Copies of the Elizabethan Magazine, dating back to the first edition in 1889, plus predecessor magazines and other documentation will be scanned, digitized and loaded onto a searchable website. Watch this space for more information on when these resources will become available.

If you are interested in joining the Dead Donkey Club, or in hearing more about it, please contact Dot Carruthers in the College Foundation office (contact details below).



If you have any questions about the Elizabeth College Foundation, or would like to arrange to visit any of the new facilities made possible by donors' generosity please contact:

Dot Carruthers, Foundation Director
01481 728217
foundation@elizabethcollege.gg

To unsubscribe from Newsletters or to update your details please contact the Foundation office as above